

H2OPTION DUAL FLUSH SPECIAL



2PC ELONGATED TOILET
w/ LINED TANK
w/ "RIGHT HEIGHT" BOWL
w/ "EVERCLEAN" SLOW CLOSE
TOILET SEAT

ONLY \$319.00

TAX INCLUDED

STARTING OCTOBER 8TH, 2011
WHILE QUANTITIES LAST

| OPTIONS | WHITE ONLY | COLOUR BONE OR LINEN |
|------------------------------------------------------------|------------|----------------------|
| H2OPTION ROUND FRONT TOILET UNLINED, LESS SEAT | \$ 343.00 | \$ 429.00 |
| H2OPTION ELONGATED TOILET UNLINED, LESS SEAT | \$ 379.00 | \$ 474.00 |
| H2OPTION "RIGHT HEIGHT" ELONGATED TOILET | \$ 397.00 | \$ 496.00 |
| ADD LINED TANK | \$ 37.00 | \$ 37.00 |
| BEMIS 200TT ROUND FRONT TOILET SEAT | \$ 39.00 | \$ 39.00 |
| BEMIS 1200TT ELONGATED TOILET SEAT | \$ 45.00 | \$ 45.00 |
| EVERCLEAN ROUND FRONT SOFT CLOSE-QUICK RELEASE TOILET SEAT | \$ 79.00 | \$ 79.00 |
| EVERCLEAN ELONGATED SOFT CLOSE-QUICK RELEASE TOILET SEAT | \$ 84.00 | \$ 84.00 |

\$60.00 REBATE AVAILABLE FROM WATERLOO REGION

**H2OPTION "RIGHT HEIGHT" RATED 1000g MaP TESTING AT 6 LITRES
FLUSHES 6 LITER AND 3.8 LITERS**

FOR MORE INFORMATION ASK OUR SALES STAFF

American Standard

Style That Works Better



BARRIER FREE

H₂O OPTION SIPHONIC DUAL FLUSH RIGHT HEIGHT™ ELONGATED TOILET

VITREOUS CHINA

H₂O OPTION SIPHONIC DUAL FLUSH RIGHT HEIGHT™ ELONGATED TOILET

2886 216

- Vitreous china
- High efficiency low-consumption Dual Flush
 - Full flush 6.0 Lpf/1.3 gpf.
 - Partial flush 3.8 Lpf/0.84 gpf.
- Elongated siphon action bowl with direct-fed jet
- 419mm (16-1/2") rim height for accessible applications
- Meets EPA Water Sense™ criteria
- Qualifies in LEEDS Program
- Fully glazed 51mm (2") trapway
- Generous 229 x 208mm (9 x 8") water surface
- Chrome-plated top mounted push button actuator
- Easy to clean sanitary dam on bowl
- 100% factory flush tested
- 2 colour-matched bolt caps
- 2 year warranty

Separate Component Parts:

- 3705 216** Right Height™ Elongated Bowl
- 4339 216** Unlined Tank
- 2886 516** Same as above with Lined tank
- 3705 216** Right Height™ Elongated Bowl
- 4339 516** Lined Tank

Nominal Dimensions:

756 x 380 x 787mm
(29-3/4" x 15" x 31")

Fixture only, seat and supply by others

Compliance Certifications -

Meets or Exceeds the Following Specifications:

- ASME A112.19.2-2008/CSA B45.1-08
Trap Seal Depth and all Dimensions
- US EPA WaterSense™ criteria for HET program

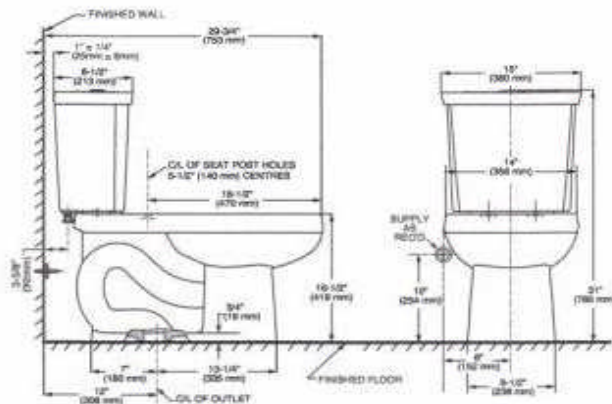
To Be Specified

- Colour: White Bone Linen
- Seat: #5324 019 "Rise and Shine" (with easy to clean lift-off hinge system) solid plastic closed, elongated front seat with cover
- Seat: #5284 016 Elongated EverClean® solid plastic seat and cover
- Seat: #5321 110 EverClean® Elongated Seat with Slow Close Snap-Off Hinges
- Supply with stop:



● When installed so top of seat is 432 to 483mm (17" to 19") from the finished floor.

MEETS THE AMERICAN DISABILITIES ACT GUIDELINES AND ANSI A117.1 REQUIREMENTS FOR ACCESSIBLE AND USEABLE BUILDING FACILITIES-CHECK LOCAL CODES.



NOTES:

THIS TOILET IS DESIGNED TO ROUGH-IN AT A MINIMUM DIMENSION OF 305MM (12") FROM FINISHED WALL TO C/L OF OUTLET.
SUPPLY NOT INCLUDED WITH FIXTURE AND MUST BE ORDERED SEPARATELY.
* DIMENSION SHOWN FOR LOCATION OF SUPPLY IS SUGGESTED.
FOR ADDITIONAL INFORMATION REFER TO INSTALLATION INSTRUCTIONS SUPPLIED.
IMPORTANT: Dimensions of fixtures are nominal and may vary within the range of tolerance established by ANSI Standard A112.19.2
These measurements are subject to change or cancellation. No responsibility is assumed for use of superseded or voided pages.

